

MAY 2017

CONSULTING - SPECIFYING

engineer[®]

www.csemag.com



40

Under Forty

The 2017 40 Under 40 winners are some of the best and brightest. Read about today's superb leaders in the building industry.



Under Forty

The 2017 40 Under 40 winners have set the bar high:
Each winner is an example of the best and the
brightest in the building industry.

BY JACK SMITH, *Content Manager, and*
AMARA ROZGUS, *Editor-in-Chief*

For the 10th year, the 40 Under 40 award winners continue to amaze. They're working on some of the biggest building and engineering projects in the world. They're focusing on younger professionals, giving them a leg-up in their careers. They're giving back to the community, often in more ways than one.

And while these 40-and-younger dynamos are all vibrant, driven people, they're just like the rest of us. They love outdoor activities and sporting events. Family is top-of-mind. They're avid travelers. Their career is not just a job—it's a passion.

As in past years, each winner was nominated by a mentor or colleague. Each works in the building or engineering field, and has risen to the top of their game. And each is superb in his or her own way.

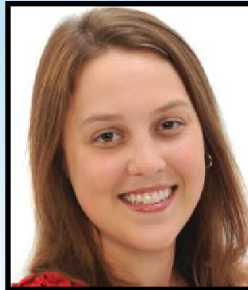
2017 Winners

| | |
|-------------------------------|----|
| Cory Abramowicz | 34 |
| Samer Alayyash | 34 |
| Sathish Anabathula | 34 |
| Jason Atkisson | 34 |
| Vahid Balali | 35 |
| Amit Bhansali | 35 |
| Nathan Cesarz | 35 |
| Brian Coffield | 35 |
| Andrew Coles | 36 |
| Gayle Davis | 36 |
| Jason DeRosa | 36 |
| Ryan Evans | 36 |
| Stephanie Guy | 38 |
| David Hinckley | 38 |
| Dina Hoerth | 38 |
| Jeremy Kelly | 38 |
| Christine Keltner | 40 |
| Matthew Khair | 40 |
| Jeffrey Landreth | 40 |
| Edward LaPine | 40 |
| Nolan Lenahan | 41 |
| Pavel Likhonin | 41 |
| Maria Lupo | 41 |
| Noel Maestre | 41 |
| William Martin | 42 |
| Jignesh Maun | 42 |
| Gabriel Millican | 42 |
| Philip Parise | 42 |
| Porscha Porter | 43 |
| Stephen Ray | 43 |
| Anthony Sannazzaro | 43 |
| Zachary Schneider | 43 |
| Sara J. Schonour | 44 |
| Joshua Schubert | 44 |
| Josh Srago | 44 |
| Brian Thompson | 44 |
| Michael P. Walton | 45 |
| Africa Welch-Castle | 45 |
| Wyatt Wirges | 45 |
| Andy Yosten | 45 |

**Christine Keltner (Gries),
PE, LEED AP, 28**

Staff Mechanical Engineer, Kerr-Greulich Engineers Inc., Louisville, Ky.

BS Mechanical Engineering, Western Kentucky University, Bowling Green

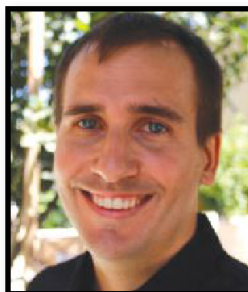


Even before graduation in 2011, Keltner began working at Kerr-Greulich Engineers Inc. (KGEI) in Louisville, Ky., as an intern. After excelling in her role as an entry-level engineer, she is now a staff fire protection/mechanical engineer. She has achieved dual licensure in HVAC/refrigeration and fire protection. She has the ability to create strong and trusting relationships. She possesses strong leadership skills and is a resource of knowledge that her peers trust tapping into. Her colleagues describe her as passionate, methodical, solution-seeking, focused, and social. She has worked on each of the three design teams at KGEI: health care, education, and commercial, each gaining her new experience and strengthening her technical skills. Keltner was married in November 2016, providing her with the opportunity to move to Bowling Green, Ky., and telecommute with KGEI. She had the foresight to make this happen by preparing a business plan, which she proposed to the president of the company. This allowed KGEI the opportunity to open a satellite office. She became a Certified Passive House Consultant to assist this organization in designing and building its first passive house. Keltner enjoys taking on various projects at home. Some of her biggest projects include remodeling her kitchen and bathroom, adding a laundry room, and installing new flooring in the home she owned before she was married.

**Jeffrey Landreth,
PE, LEED AP, CEA, CEM, CPM, BEAP, BEMP, ENV SP, 35**

Principal, Director of Energy and Sustainability, tk1sc, Los Angeles

BS and MS Architectural Engineering, Kansas State University, Manhattan



Landreth's strong and diverse career path started with his first full-time job at Arup's Los Angeles office working in the energy consulting group. His range of experience propelled his career in the consulting-engineering world. After 6 years of professional work, he started, managed, and operated his own engineering consulting firm in partnership with his wife, Monica. He successfully ran and grew the company for nearly 3 years before the business was acquired by California-based tk1sc; he was quickly named director of energy and sustainability there. During his short time at the firm, Landreth has developed his team into a highly integrated and valuable department and has played a major role in reshaping and refining the overall vision of the firm. In January 2017, he was promoted to principal and has established himself as a well-respected leader within the firm as well as within local industry. Landreth's project experience includes design, analysis, and commissioning for commercial, institutional, industrial, high-tech, laboratory, health care, and central-plant projects. He enjoys being active outdoors, especially at the beach, and spending time with family and friends. He also enjoys building and tinkering around the house. His most rewarding hobby project has been the conversion of a Volkswagen bus from a gasoline engine to a fully electric vehicle.

Matthew Khair, 32

Associate/Core Team Leader, Clark, Richardson & Biskup Consulting Engineers Inc. (CRB), Rockville, Md.

BS Biomedical Engineering, Drexel University, Philadelphia



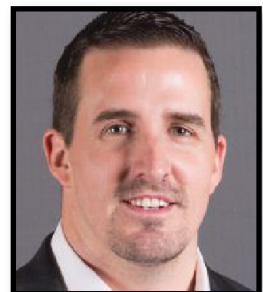
Khair is a core team leader at CRB in Rockville, Md., with more than 10 years of combined design and management experience in the biopharmaceutical industry. He currently manages a multidiscipline architectural and engineering design team focused on the Maryland life sciences market. His leadership role engages him in projects through conceptual, preliminary, and detailed design efforts. His process-engineering background uniquely equips him to understand the priorities and challenges of process-focused biotech projects. Not only has Khair taken an active role in participating in local community outreach programs, but he has also fostered an environment that promotes it. He sponsored, participated, and encouraged his employees to attend Family STEM night at Parkland Magnate Middle School, Rockville, Md. The program was created to introduce middle school students and their parents to various career opportunities within the science, technology, engineering, and math industries. Khair and his team also chose other charities in the local area in which to participate. These included donating coloring books, crayons, and markers for the pediatric ward at Shady Grove Hospital in Rockville; spending time with his three daughters; playing and watching sports; and learning more about the new hobby he shares with his wife, woodworking.

Edward LaPine, PE, CFEI, 36

Director, Manhattan Office, JENSEN HUGHES, New York

BS Mechanical Engineering, Villanova University, Pa.

MS Fire Protection Engineering, University of Maryland, College Park



LaPine is director of JENSEN HUGHES' Manhattan office with more than 10 years of experience. Previously based in JENSEN HUGHES' PHOENIX office, he relocated to New York in January 2017 for the opportunity to lead the Manhattan office and to live closer to his family. He joined the firm in 2007 as a consultant and was promoted to associate consultant and then senior consultant before becoming director of the Phoenix office in 2015. As office director, LaPine's responsibilities include business development with new and existing clients as well as management of technical and support staff. He specializes in building and fire code consulting, including maintaining relationships with authorities having jurisdiction to resolve complex code issues and to develop alternative code solutions. LaPine's expertise also includes accessibility consulting and smoke-control design. His project approach focuses on balancing each facility's operational and architecture design goals with the fire protection and life safety requirements of the applicable codes. He loves playing ice hockey and enjoys hiking and spending time with his family and friends. LaPine also recently became involved with Team Rubicon, a volunteer emergency-response group and disaster-recovery team that assists in disaster areas affected by wildland fires, earthquakes, flooding, and tornados.