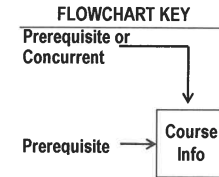
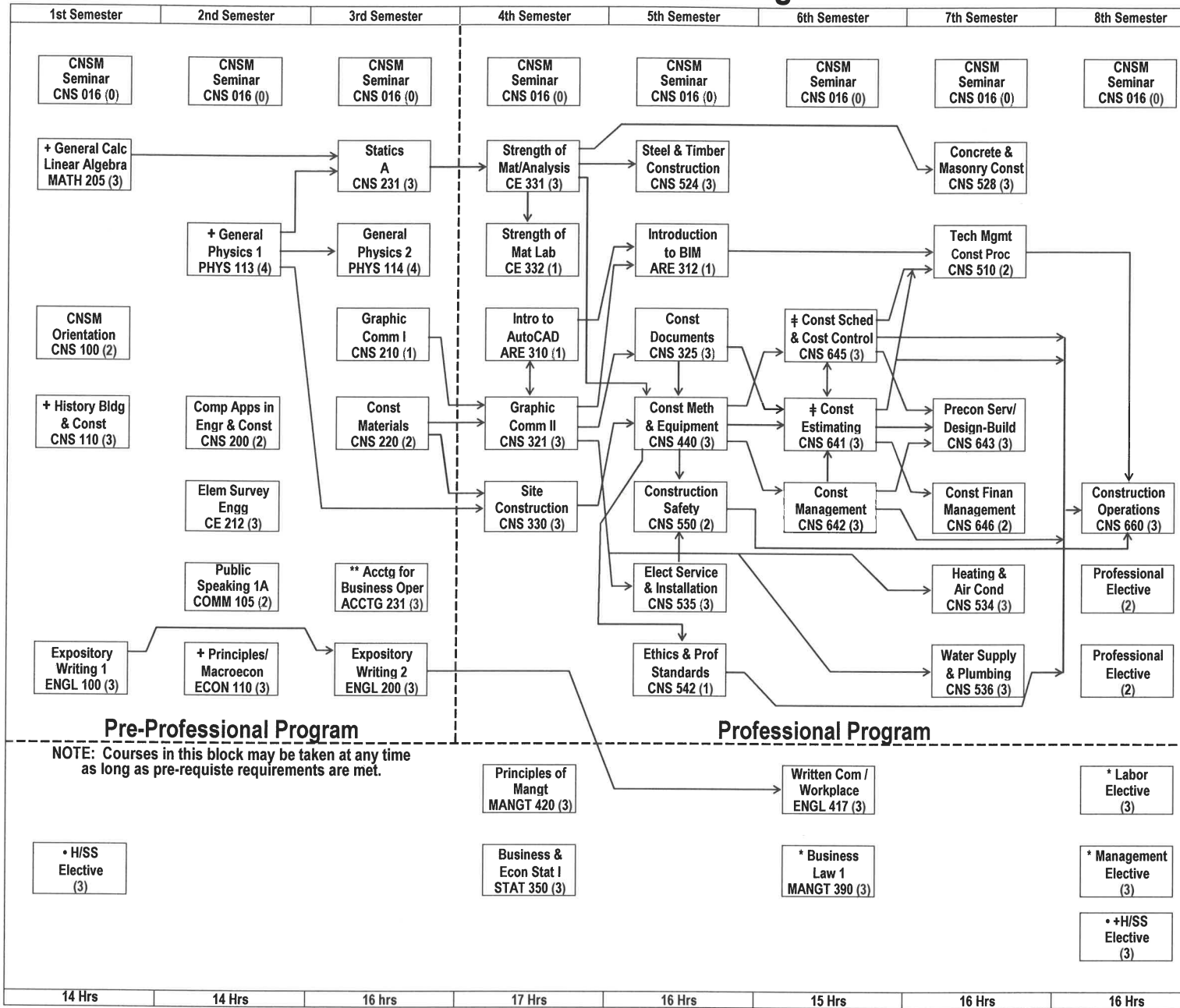


Construction Science and Management

FALL 2014



‡ Must be taken together.

K-State 8 Tag +	CNSM
Aesthetic Experience and Interpretive Understanding	CNS 110
Empirical and Quantitative Reasoning	MATH 205
Ethical Reasoning and Responsibility	CNS 542
Global Issues and Perspectives	ECON 110
Historical Perspectives	CNS 110
Human Diversity within the U.S.	H/SS Elective
Natural and Physical Sciences	PHYS 113
Social Sciences	ECON 110

Labor Elective
ECON 523 H Resource Economics or ECON 620 Labor Economics or MANGT 530 Industrial Labor Relations

Pre-Professional Program

NOTE: Courses in this block may be taken at any time as long as pre-requisite requirements are met.

Professional Program

- Fall 2014
- Humanities and Social Science (H/SS) Electives are to be selected from the official College of Engineering H/SS course list.
 - ** Management Electives, Labor Electives and Professional Electives are to be selected from current approved Departmental lists.
 - * These courses in Business and Management require Junior standing.
 - ** Accounting requires sophomore standing (30 credit hours).