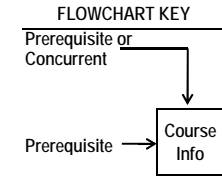
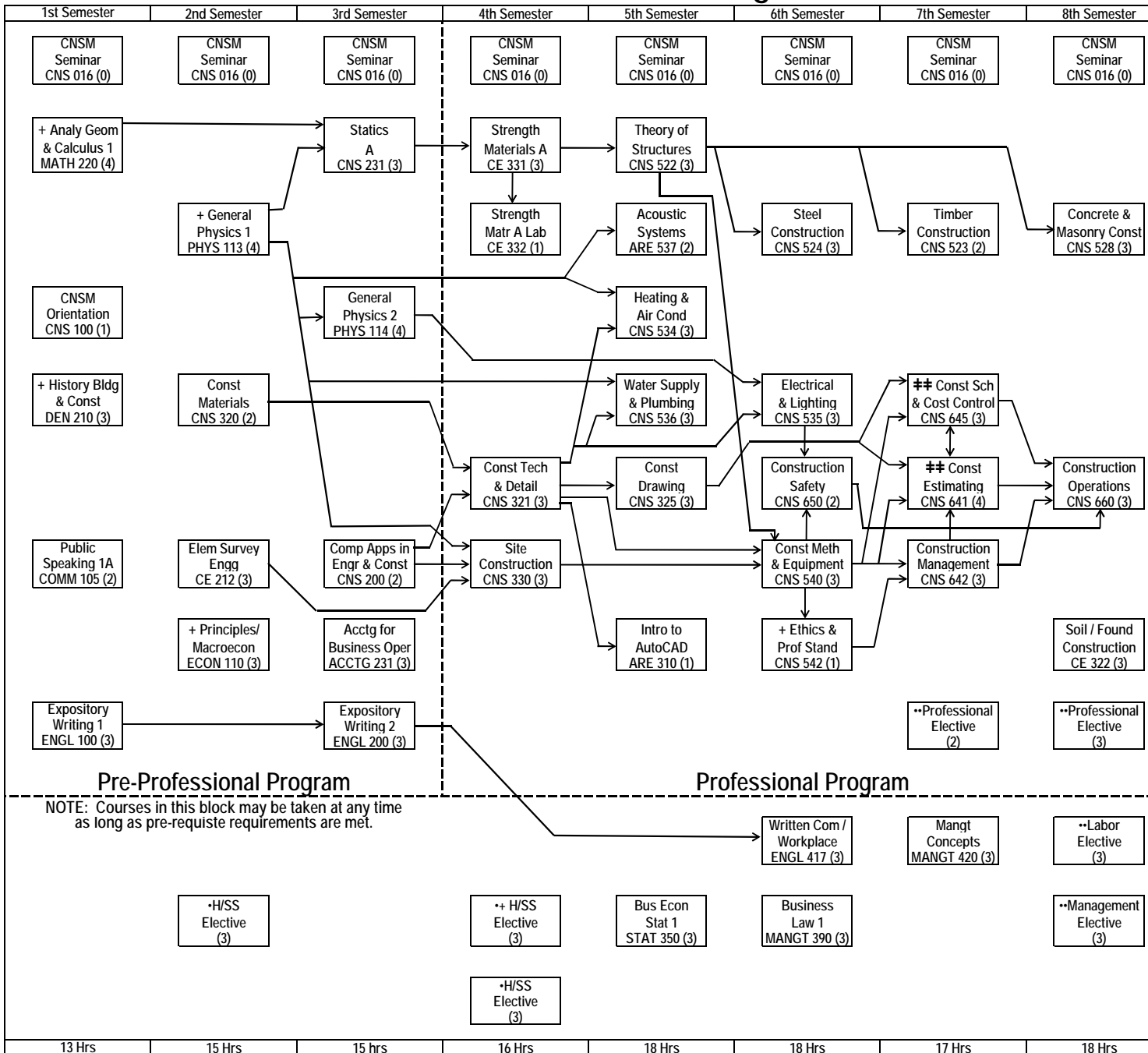


# Construction Science and Management

FALL 2011



## Must be taken together.

K-State 8 Tag +	CNSM
Aesthetic Experience and Interpretive Understanding	DEN 210
Empirical and Quantitative Reasoning	MATH 220
Ethical Reasoning and Responsibility	CNS 542
Global Issues and Perspectives	ECON 110
Historical Perspectives	DEN 210
Human Diversity within the U.S.	H/SS Elective
Natural and Physical Sciences	ECON 110
Social Sciences	PHYS 113

Labor Elective
ECON 523 H Resource Economics or ECON 620 Labor Economics or MANGT 530 Industrial Labor Relations

NOTE: Courses in this block may be taken at any time as long as pre-requisite requirements are met.