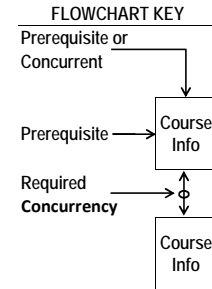
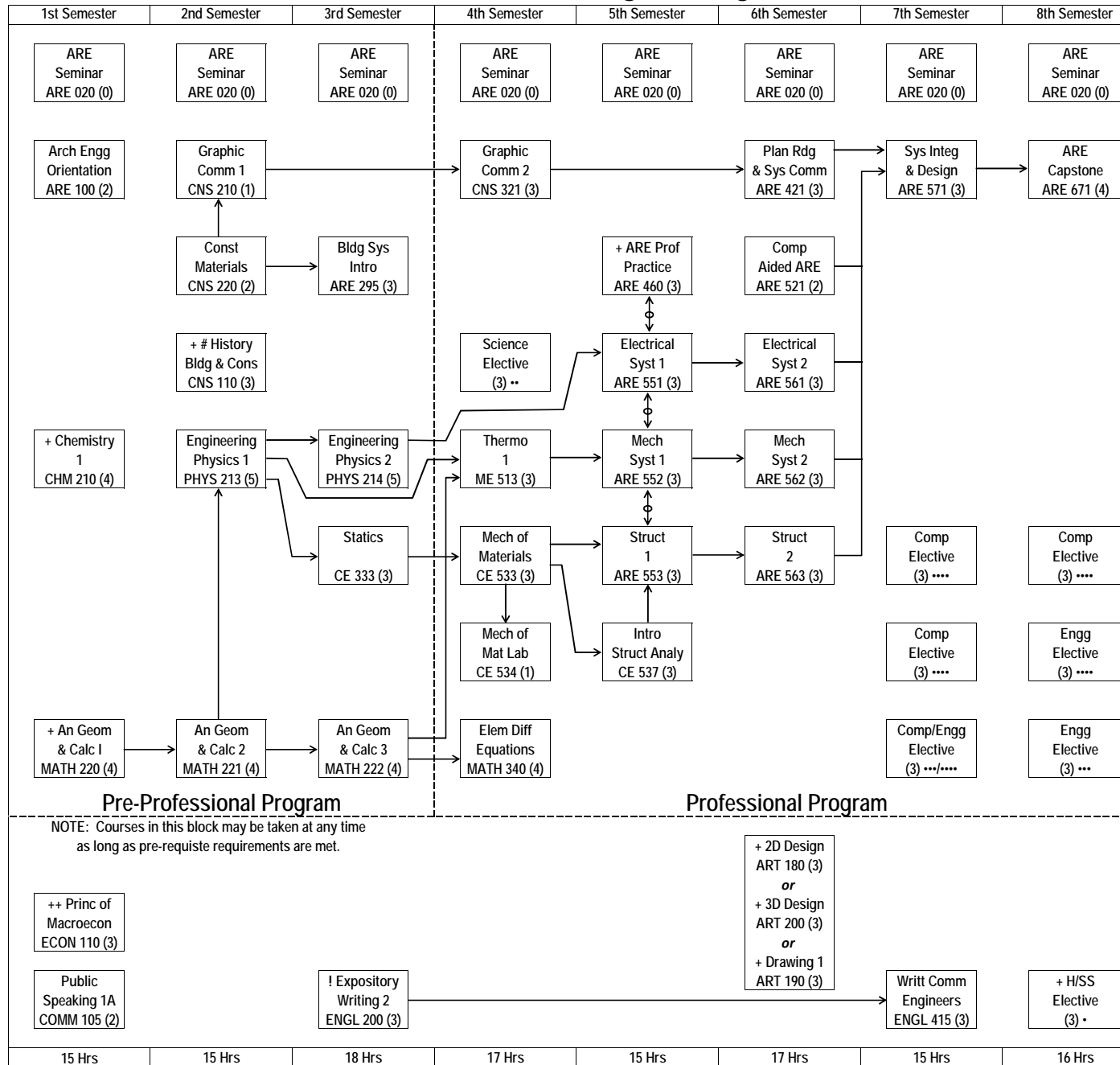


Architectural Engineering

FALL 2015



K-State 8 Tag +	ARE
Aesthetic Experience and Interpretive Understanding	ART Elect
Empirical and Quantitative Reasoning	MATH 220
Ethical Reasoning and Responsibility	ARE 460
Global Issues and Perspectives	ECON 110
Historical Perspectives	CNS 110
Human Diversity within the U.S.	H/SS Elect
Natural and Physical Sciences	CHM 210
Social Sciences	ECON 110

Total Hours
128

- Fall 2015
- Humanities and Social Science (H/SS) Electives are to be selected from the official College of Engineering H/SS course list. ARCH 301 is not approved for ARE/CNS majors.
 - Science elective is to be selected from the current approved Department list.
 - Engineering electives are to be selected from the current approved Department list.
 - Complementary Electives are to be selected from the current approved Department list.
 - ! English 100, or equivalent, is required before students may enroll in English 200.
 - # ARCH 301 is not approved as a substitute without prior approval. Advisor must submit course substitution request form.